



首都国际会展中心  
CAPITAL INTERNATIONAL EXHIBITION & CONVENTION CENTER



首都国际会展中心

地址:北京市顺义区裕东路55号院

邮编:101318

展览中心销售热线: 010-81600888

会议中心&酒店: 张女士 13910652831

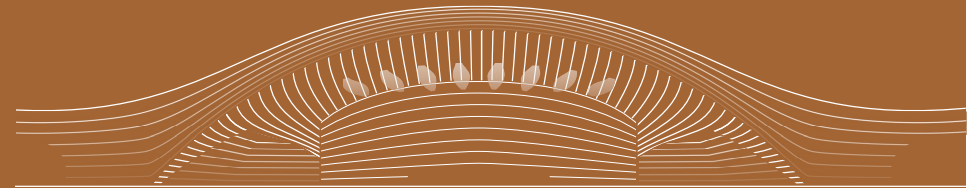
CAPITAL INTERNATIONAL EXHIBITION & CONVENTION CENTER

ADDRESS: NO.55, YUDONG ROAD, SHUNYI DISTRICT, BEIJING

POSTCODE: 101318

EXHIBITION CENTER CONTACT: 010-81600888

CONVENTION CENTER&HOTEL CONTACT: MS.ZHANG (86)13910652831



CAPITAL INTERNATIONAL  
EXHIBITION & CONVENTION CENTER

首都国际会展中心

## 目录 CONTENTS

<b>展馆简介</b> INTRODUCTION	<b>01</b>
<b>展馆概览</b> OVERVIEW	<b>03</b>
<b>区位交通</b> LOCATION&TRANSPORTATION	<b>05</b>
<b>展览中心设施</b> EXHIBITION CENTER	<b>06</b>
展厅一层 EXHIBITION CENTER 1F	06
馆间平面总览 INTERLIBRARY FLOOR PLAN OVERVIEW	07
展厅二层 EXHIBITION CENTER 2F	09
东登录厅一层 EAST ENTRANCE HALL 1F	11
东登录厅三层 EAST ENTRANCE HALL 3F	13
南登录厅一层 SOUTH ENTRANCE HALL 1F	15
北登录厅一层 NORTH ENTRANCE HALL 1F	16
<b>会议中心设施</b> CONVENTION CENTER	<b>17</b>
会议中心一层 CONVENTION CENTER 1F	17
会议中心二层 CONVENTION CENTER 2F	19
会议中心三层 CONVENTION CENTER 3F	21
<b>配套酒店及服务</b> HOTEL AND SERVICES	<b>23</b>



## INTRODUCTION

## 展馆简介

## 释放全球影响 彰显大国风范

EXPAND GLOBAL INFLUENCE, DISPLAY MAJOR-COUNTRY PRIDE



首都国际会展中心 (CAPITAL INTERNATIONAL EXHIBITION & CONVENTION CENTER) 作为“十四五”北京市重大项目，承担着落实首都“四个中心”战略定位，深入实施人文北京、科技北京、绿色北京战略，促进国际交往中心建设重要平台和载体的关键职责。

As a key project within Beijing's 14th Five-Year Plan, Capital International Exhibition & Convention Center plays a critical role in strengthening the city's strategic position as the "Four Centers" - the national political center, cultural center, international exchange center and national innovation center. It aims to support the advancement of the "Cultural Beijing, Technological Beijing, and Green Beijing" initiatives, functioning as a vital platform and vehicle for developing Beijing into an international exchange center.

中国国际展览中心 (顺义馆) 与首都国际会展中心 (新国展二期) 双馆凭借优越的地理位置、先进的配套设施，共同形成净展面积超31万平米的首都会展集群，进一步增强首都展览场馆服务保障能力，提升北京在全球会展业的综合竞争力。

The two adjacent large-scale venues, China International Exhibition Center (Shunyi Hall) and Capital International Exhibition & Convention Center, benefiting from advantageous geographical locations and advanced supporting facilities, jointly form a major event industry cluster in Beijing with a net exhibition area exceeding 310,000 square meters. This significantly enhances Beijing's event service capacity, further boosting the Capital's comprehensive competitiveness within the global MICE industry.

首都国际会展中心主要由展览中心、会议中心和酒店三部分构成，展览中心共设有9个展厅和3个登录厅，净展面积21万平方米。会议中心设有35间不同规模的会议厅室，净会面积1.5万平方米，场馆配套酒店可提供410间客房。

The venue comprises three main sections: the Exhibition Center, the Convention Center, and the Hotel. The Exhibition Center boasts 9 halls and 3 entrance halls, offering a total net exhibition area of 210,000 sqm. The Convention Center features 35 meeting rooms of various sizes, with a total net meeting area of 15,000 sqm. The accompanying hotel provides 410 guest rooms.

项目位于北京市顺义新城后沙峪组团东南部、中国国际展览中心 (顺义馆) 北侧，京密路和地铁15号线西侧，距首都机场2公里、天安门24公里。总建筑面积61.1万平方米，是北京市目前建筑规模最大，功能完善且技术先进的综合型会展场馆。

Located in the southeastern part of Houshayu District, Shunyi New Town, Beijing, on the north of the China International Exhibition Center (Shunyi Hall), and west of Jingmi Road and Metro Line 15, this venue is merely 2 kilometers from Beijing Capital International Airport and 24 kilometers from Tiananmen Square. With a total construction area of 611,000 sqm, the Capital International Exhibition & Convention Center is currently Beijing's largest and most comprehensive event complex, outfitted with advanced technologies.



## OVERVIEW

## 展馆概览

## 多维空间：创新之轴贯穿南北

MULTIDIMENSIONAL SPACE: THE INNOVATION AXIS LINKING NORTH AND SOUTH

中轴空间是整个会展中心的中心枢纽，在这条共享空间的轴线上设置了南北登录厅、序厅以及连接会议酒店的景观连廊，各展厅交错分列两侧。

The central axis space serves as the central hub of the entire venue. It connects the north and south entrance halls, the prelude halls, and the landscaped corridor connecting the convention center and hotel, which are symmetrically staggered on both sides of the central hub.

北、东、南 3 个登录厅  
展厅 9 个（含无柱展厅 2 个）  
3 Entrance Halls: North, East and South  
9 Exhibition Halls, including 2 Exhibition Halls (Pillarless)

室内净展面积 / 平方米  
Net Exhibition Area (sqm)

210,000

单个展厅面积 / 平方米  
Single Exhibition Area (sqm)

23,000

会议中心  
Convention Center

无柱展厅  
Exhibition Hall (Pillarless)

北登录厅  
North Entrance Hall

配套酒店  
Hotel

无柱展厅  
Exhibition Hall (Pillarless)

东登录厅  
East Entrance Hall

南登录厅  
South Entrance Hall

馆间会议室 9 间  
Inter-hall Meeting Rooms 9

最大多功能厅 / 平方米  
Maximum Multi-functional Hall (sqm)

4,400

室外展场面积 / 平方米  
Outdoor Exhibition Area (sqm)

50,000



NATIONAL EXHIBITION LANDMARK, CONVERGING WORLD INTERACTIONS

 **北京朝阳站**  
车程 40 分钟

The project will create a comprehensive complex centered around the MICE industry, integrating the Beijing Capital International Airport, the Exhibition and Convention Center, and the Airport Economic Core Zone into a unified regional growth pole. It aims to establish a new international business hub in northeast Beijing, distinguished by innovation, brand concentration, and high added value.

便利店 Convenience Shop



EXHIBITION CENTER  
展览中心设施  
INTERLIBRARY FLOOR PLAN OVERVIEW  
馆间平面总览



参数表 PARAMETERS

场馆信息 Room	A1	A2	A3	A4
柱子 /Pillar	无柱 Pillarless Hall	有柱 Pillared Hall	有柱 Pillared Hall	有柱 Pillared Hall
毛面积 (平方米) /Gross Area ( m <sup>2</sup> )	23000	23000	23000	23000
高度 (米) /Height ( m )	16	13	13	13
地面荷载 (吨) /Floor Load Capacity ( ton )	8	8	8	8
吊点荷载 (千克) /Load Capacity of Rigging Point ( kg )	200	200	200	200
吊点间距 (米) /Rigging Point Spacing ( m )	5.6m×6.0m	5.6m×6.0m	5.6m×6.0m	5.6m×6.0m
货门 (个) /Cargo Door	2个 4.2m×4.8m 9个 4.9m×4.8m 1个 6.4m×8m	2个 4.2m×4.8m 9个 4.9m×4.8m	2个 4.2m×4.8m 9个 4.9m×4.8m	2个 4.2m×4.8m 9个 4.9m×4.8m
贵宾休息室 (间) /VIP Room	1	1	1	1
卫生间 (组) /Restroom	4	4	4	4

场馆信息 Room	B1	B2	B3	B4	B5
柱子 /Pillar	无柱 Pillarless Hall	有柱 Pillared Hall	有柱 Pillared Hall	有柱 Pillared Hall	有柱 Pillared Hall
毛面积 (平方米) /Gross Area ( m <sup>2</sup> )	23000	23000	23000	23000	23000
高度 (米) /Height ( m )	16	13	13	13	13
地面荷载 (吨) / Floor Load Capacity ( ton )	8	8	8	8	8
吊点荷载 (千克) / Load Capacity of Rigging Point ( kg )	200	200	200	200	200
吊点间距 (米) / Rigging Point Spacing ( m )	5.6m×6.0m	5.6m×6.0m	5.6m×6.0m	5.6m×6.0m	5.6m×6.0m
货门 (个) /Cargo Door	2个 4.2m×4.8m 9个 4.9m×4.8m	2个 4.2m×4.8m 9个 4.9m×4.8m	2个 4.2m×4.8m 9个 4.9m×4.8m	2个 4.2m×4.8m 9个 4.9m×4.8m	2个 4.2m×4.8m 9个 4.9m×4.8m
贵宾休息室 (间) /VIP Room	1	1	1	1	1
卫生间 (组) /Restroom	4	4	4	4	4

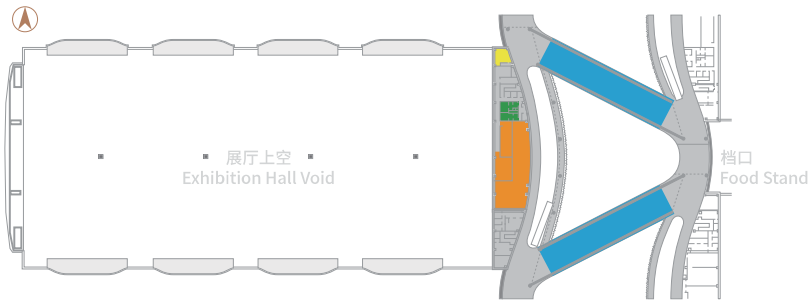


EXHIBITION CENTER  
展览中心设施  
EXHIBITION CENTER 2F  
展厅二层

丝带连廊 SKYBRIDGE



平面图 FLOOR PLAN



- 就餐休息区 Food Court      货梯 Freight Lift  
餐饮铺位 / 会议室 Catering/Meeting Room      卫生间 Restroom      柱子 Pillar

参数表 PARAMETERS

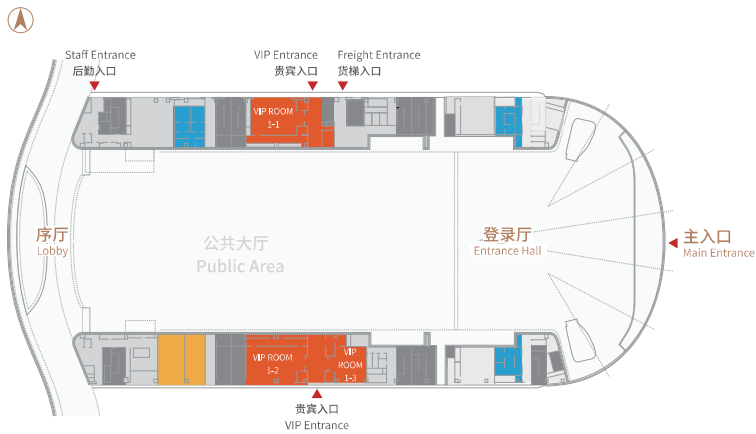
场馆信息 Room	楼层 Floor	面积 (平方米) Area (m <sup>2</sup> )	数量 (个) NO.
展厅配套会议室 Meeting Room	2	544	3
餐饮连廊 Catering Corridor	2	955	9



EXHIBITION CENTER  
展览中心设施  
EAST ENTRANCE HALL 1F  
东登录厅一层



平面图 FLOOR PLAN



- 卫生间 Restroom
- 商务中心 Business Center
- VIP 休息室 VIP Room

参数表 PARAMETERS

场馆信息 Room	楼层 Floor	面积 (平方米) Area (m <sup>2</sup> )	长 × 宽 × 高 (米) L × W × H (m)
贵宾室 /VIP Room 1-1	1F	176	16×11×3.8
贵宾室 /VIP Room 1-2	1F	187	17×11×3.8
贵宾室 /VIP Room 1-3	1F	121	11×11×3.8



EXHIBITION CENTER  
展览中心设施  
EAST ENTRANCE HALL 3F  
东登录厅三层

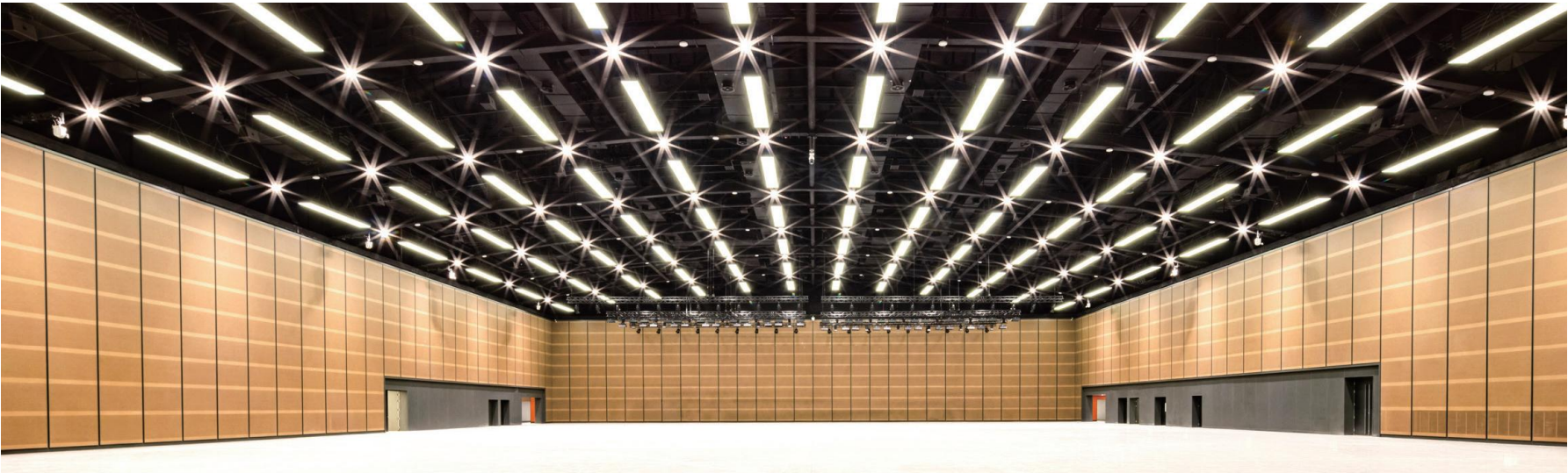
平面图 FLOOR PLAN



- 卫生间 Restroom
- 厨房 Kitchen
- 贵宾室 VIP Room

参数表 PARAMETERS

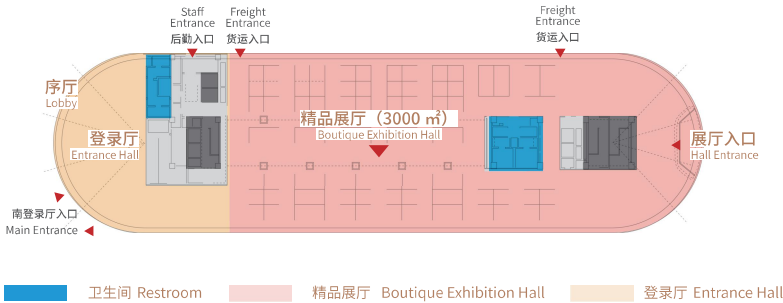
场馆信息 Room	楼层 Floor	毛面积 (平方米) Gross Area (m <sup>2</sup> )	长 x 宽 x 高 (米) L x W x H (m)
多功能厅 /Multi-functional Hall			
多功能厅 /Multi-functional Hall	3F	4400	80×55×14
贵宾厅 /VIP Room			
贵宾室 /VIP Room 3-1	3F	135	15×9×2.8



EXHIBITION CENTER  
展览中心设施  
SOUTH ENTRANCE HALL 1F  
南登录厅一层



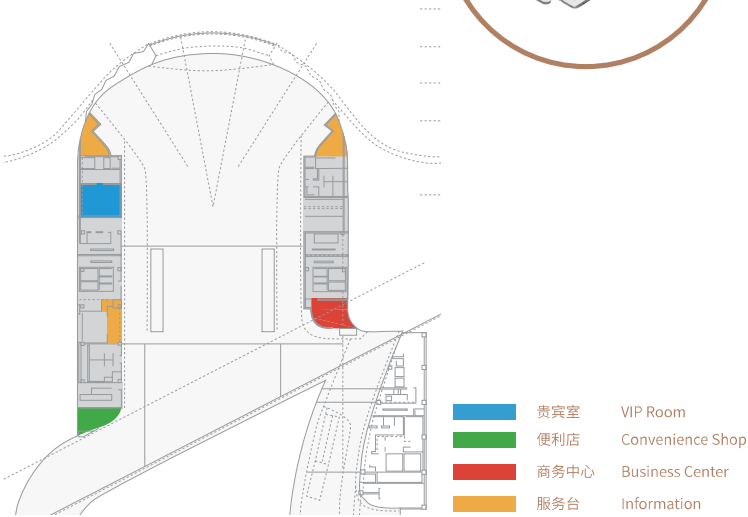
平面图 FLOOR PLAN



参数表 PARAMETERS

场馆信息 Room	楼层 Floor	毛面积 (平方米) Gross Area (m <sup>2</sup> )	长 x 宽 x 高 (米) L x W x H (m)
精品展厅 Boutique Exhibition Hall	1F	3000	88 x 35 x 6

EXHIBITION CENTER  
展览中心设施  
NORTH ENTRANCE HALL 1F  
北登录厅一层

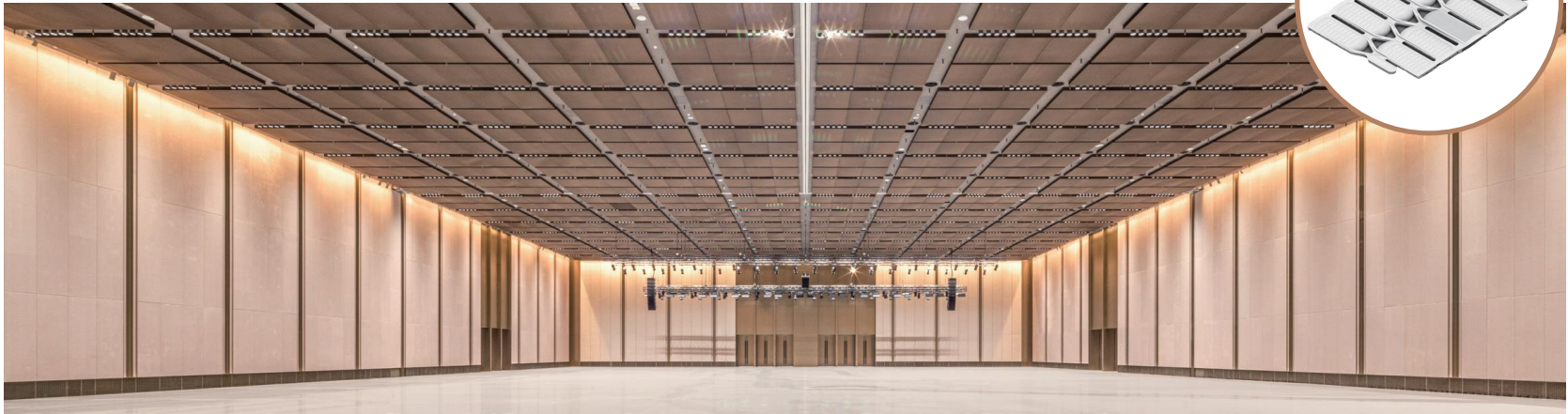


参数表 PARAMETERS

场馆信息 Room	楼层 Floor	贵宾室 VIP Room	便利店 Convenience Shop	商务中心 Business Center	服务台 Information
北登录厅 North Entrance Hall	1F	69m <sup>2</sup>	1	1	3



CONVENTION CENTER  
会议中心设施  
CONVENTION CENTER 1F  
会议中心一层



平面图 FLOOR PLAN



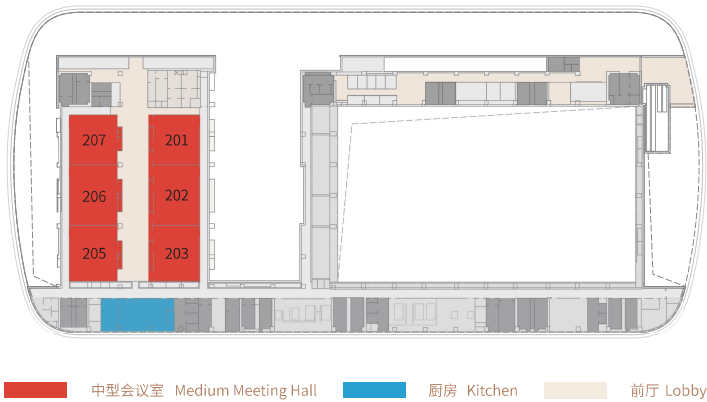
参数表 PARAMETERS

场馆信息 Room	楼层 Floor	面积 (平方米) Area (m <sup>2</sup> )	长 x 宽 x 高 (米) L x W x H (m)
主会厅 (多功能厅) /Multi-functional Hall			
大会堂ABC(可分割) /Plenary Hall	1F	5000	98×51×12
贵宾室 /VIP Room			
VIP1-1	1F	90	12×7×4
VIP1-2	1F	90	12.5×7.2×4
VIP1-3	1F	80	11×7×4
VIP1-5	1F	90	12×7.5×4
VIP1-6	1F	70	8.5×8×4
中型会议室 /Medium Meeting Hall			
101	1F	300	20×15×5
102	1F	400	24×16.5×5
103	1F	300	20×15×5
105	1F	190	14×13×5
106	1F	170	17×9×5
107	1F	220	16×13×5

CONVENTION CENTER  
会议中心设施  
CONVENTION CENTER 2F  
会议中心二层



平面图 FLOOR PLAN



参数表 PARAMETERS

场馆信息 Room	楼层 Floor	面积 (平方米) Area (m <sup>2</sup> )	长 x 宽 x 高 (米) L x W x H (m)
中型会议室 /Medium Meeting Hall			
201	2F	170	13.5×12.5×5
202	2F	210	17×12.5×5
203	2F	190	15.5×12.5×5
205	2F	200	15.5×13×5
206	2F	220	17×13×5
207	2F	180	13.5×13×5



CONVENTION CENTER  
会议中心设施  
CONVENTION CENTER 3F  
会议中心三层



平面图 FLOOR PLAN



中型会议室 Medium Meeting Hall 贵宾室 VIP Room 前厅 Lobby  
大宴会厅 Ground Ballroom 厨房 Kitchen

参数表 PARAMETERS

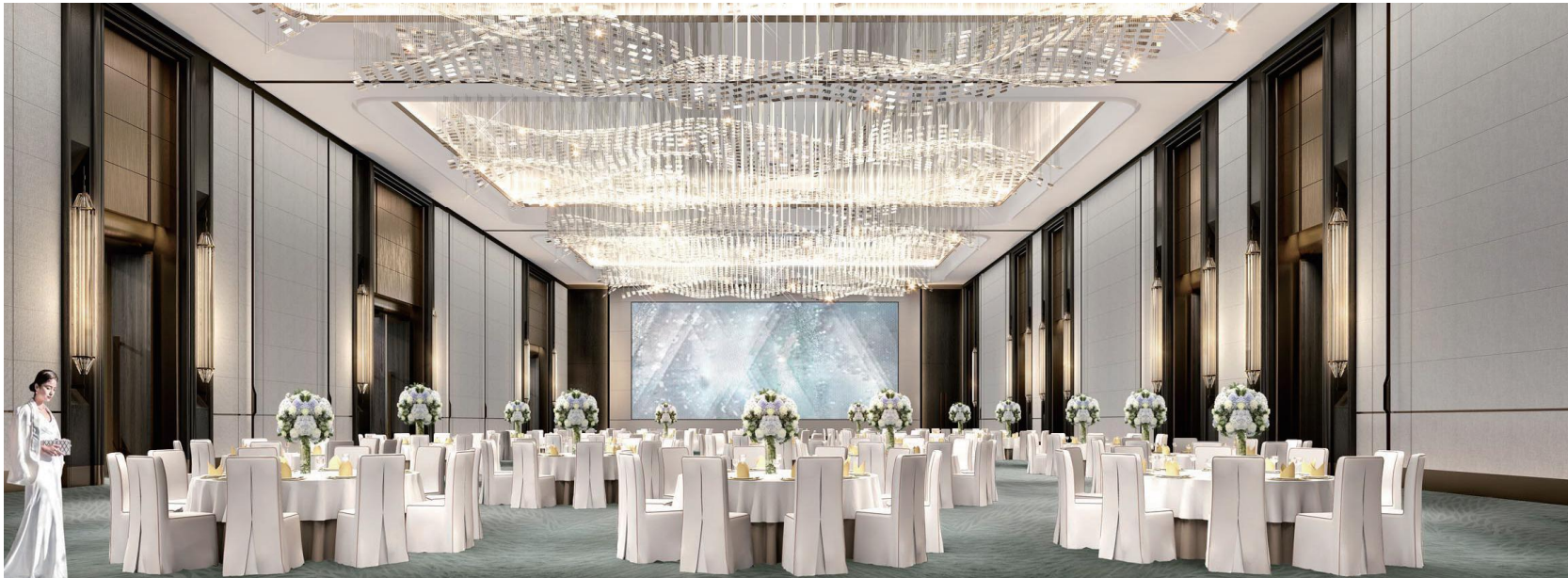
场馆信息 Room	楼层 Floor	面积 (平方米) Area (m <sup>2</sup> )	长 x 宽 x 高 (米) L x W x H (m)
中型会议室 /Medium Meeting Hall			
301	3F	410	25×16.5×5
302	3F	410	25×16.5×5
303	3F	200	15.5×13×5
305	3F	200	16×13×5
306	3F	170	14×12.5×5
307	3F	170	14×12×5
308	3F	200	17×12×5
309	3F	200	16×12×5
310	3F	220	16×13.5×5
311	3F	230	17×13.5×5
312	3F	190	14×13.5×5
大宴会厅 /Ground Ballroom			
大宴会厅 AB (可分割)/Ground Ballroom AB	3F	3000	55×54.5×12

## HOTEL AND SERVICES 配套酒店及服务

首都国际会展中心将主要聚焦场馆运营、会展服务、商业经营等业务板块，打造多元业态的会展综合体。场馆运营主要为场馆出租、展台搭建、设备租赁、会议室出租、智慧化服务等。会展服务主要为展览、会议、大型活动承接，会展项目主承办等。商业经营主要为场馆配套餐饮、购物等服务。

Capital International Exhibition & Convention Center will focus on three core business areas: venue operation, MICE services, and commercial services, aiming to create an event complex with diverse business activities: Venue operation will include venue leasing, booth construction, equipment rental, meeting room leasing, and intelligent services; MICE services will cover hosting/organizing/co-organizing exhibitions, conventions, large-scale events; Commercial services will primarily provide supporting services such as catering and shopping, etc..

酒店房型 Rooms Type	客房数量 Number of Rooms	床位数 Number of Beds
豪华大床 Deluxe King	130	130
豪华双床 Deluxe Twin	145	290
行政大床 Club King	76	76
行政双床 Club Twin	21	42
豪华套房 Premier Suite	34	34
无障碍房 Deluxe Acc King Nsmk	4	4
总计 Total	410	576



配套酒店 Hotels

## 北京现代服务业 扩大开放的展示窗口

Beijing's Modern Service Sector:  
A Window to Demonstrate Expanding  
its Opening up to the World.



贵宾室 VIP Room



泳池 Swimming Pool



大床房 Guest Room